

# KDS 3060 AFR alcove shower

**Model number:**

142037

**Dimensions:** 60" x 30" x 83"

**Installation:** Alcove

**Material:** AcrylX™



## Standard Features:

- Four-piece shower with AcrylX™ finish & PIN system for easy front installation
- Large top corner shelves, wide soap dish and standard acrylic handle (opt. metallic finishes)
- Textured floor
- Optional unique features: Reinforced walls and grab bars
- Above-the-Floor Rough

## Product characteristics:

- Multi-Piece Unit
- Easy Installation
- PIN system

## Warranty:

Lifetime limited

## Standard colors:



White (002)



Bone (004)



Biscuit (007)

## Certifications

MAAX products adhere to one or more of the following certifications:



## Recommended doors (Visit our website for a complete list of our recommended doors)

Description	No
134565	Kameleon Sliding Shower Door 55-59 x 71 in. 6 mm
134665	Kameleon SC Sliding Shower Door 55-59 x 71 in. 6 mm
105412	Polar Sliding Shower Door 54-59 ½ x 68 in.

## Options (Visit our website for a complete list of our options)

No	Description
<input type="checkbox"/> OPT 10109	One 12-in. handle with metallic finish
<input type="checkbox"/> OPT 20200	Pre-assembled unit
<input type="checkbox"/> OPT 20203-B	18" Modern straight horizontal grab bar on back wall
<input type="checkbox"/> OPT 20203-VL	18" Modern straight vertical grab bar on left wall(factory installed)
<input type="checkbox"/> OPT 20203-VR	18" Modern straight vertical grab bar on right wall(factory installed)

# KDS 3060 AFR alcove shower

**Model number:**

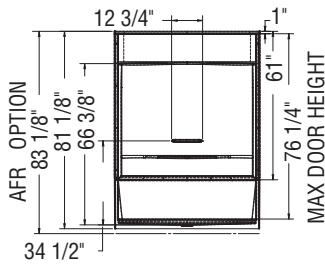
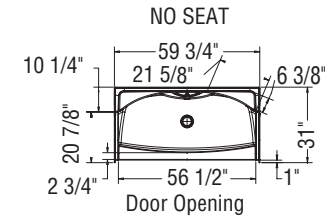
**142037**

**Dimensions:** 60" x 30" x 83"

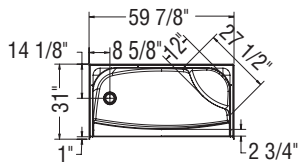
**Installation:** Alcove

**Material:** AcrylX™

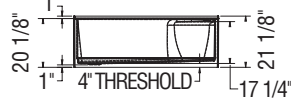
**STANDARD**



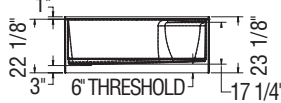
**RIGHT SEAT SHOWN  
LEFT SEAT SYMMETRICAL**



**NOT ABOVE-THE-FLOOR**

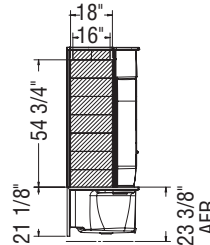


**ABOVE-THE-FLOOR**

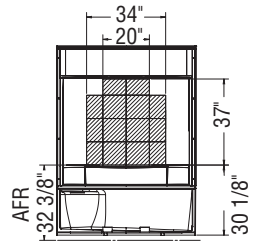


**REINFORCEMENT BACKING**

OPTION 20212-L Shown  
OPTION 20212-R Symmetrical

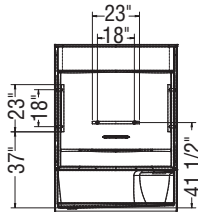


OPTION 20212-B

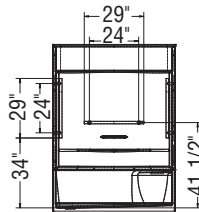


**GRAB BARS**

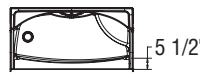
OPTION 20203



OPTION 20204



OPTION  
20203-20204



All dimensions are approximate. Structure measurements must be verified against the unit to ensure proper fit.

**Dimensions:**

59 3/4 x 30 x 83 1/8 in.

**Weight:**

152 lbs -

**Shape:**

Rectangular

**Pieces:**

4

**Drain location:**

No seat, center drain

Left seat, right drain

Right seat, left drain

Project:

Contractor:

Representative:

Date:

Tel:

Notes: